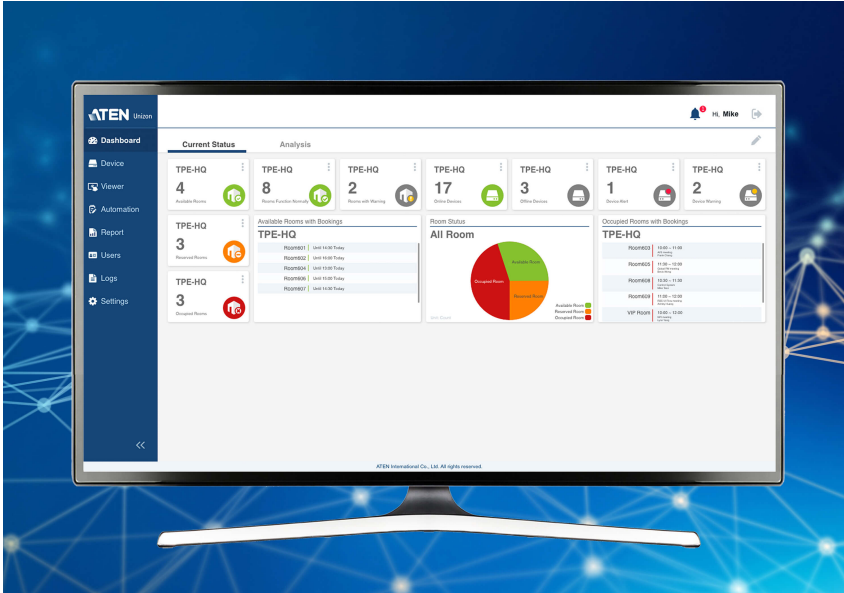


## ATEN Unizon

Global AV Management Platform



### Your Power to Monitor, Control, Manage

ATEN Unizon™ is a server-based software for AV and IT professionals to centrally monitor, control, and manage ATEN Modular Matrix and third-party devices connected to the ATEN Control System Controllers anytime, anywhere.

[GET FREE TRIAL!](#)



## Device Condition Monitoring

Real-time monitoring and tracking of device condition for troubleshooting and maintenance.

### Condition Detection

Automatically detects device power status, temperature, fan, and connection status, helping you perform maintenance to avoid potential device failures.

R302

Add Device ▼
Refresh

VM1600A
Actions
Upgrade
🗑️

		Device	Health	Connection	Power Supply	Power Status	Fan	Temperature
<input type="checkbox"/>	1st	R409 ✖️🌀	⚠️	●	●	●	●	●
<input type="checkbox"/>	1st	QAtest-1 ✖️🌀	—	●	—	—	—	—

More

VM6404H
Actions
Upgrade
🗑️

		Device	Health	Connection	Temperature	Fan	IP Address
<input type="checkbox"/>	1st	33333_Louis VM6404H ✖️🌀	⚠️	●	—	—	10.3.52.109
<input type="checkbox"/>	1st	VM6404H ✖️🌀	⚠️	●	—	—	10.3.52.209

More

94 Hi, 123456

Add Device ▼
Refresh

Upgrade
🗑️

Device	Health	Connection	Temperature	Fan
M6404H	✔️	●	●	●
M6404Herewr	✔️	●	●	●

Upgrade
🗑️

Device	Health	Connection	Power Supply	Power Status	Fan
M1600A	⚠️	●	-	-	-
Atest-1	-	●	-	-	-

Logs / Notifications Remove All

- i **Device removed**  
 The user admin was una...  
 Control Center > AIEN China  
 2019-04-15 18:05:31
- i **Device removed**  
 The user admin was una...  
 Control Center > AIEN China  
 2019-04-15 17:57:35
- i **Location added**  
 The user admin has adde...  
 2019-04-15 17:54:25
- i **Location added**  
 The user admin has adde...  
 2019-04-15 17:54:15
- i **Location added**  
 The user admin has adde...

**Alerts and Notifications**

Instantly get notified of device abnormalities to perform troubleshooting actions and reduce down-time.

**System Log**

Device usage and abnormal events are recorded so you can analyze past usability and plan future optimization.

Time	Category	Severity	Event	Description
2019-04-14 08:31:57	Device trap	Information	Device name synchronized	The name for de fully.
2019-04-14 08:31:57	Device trap	Information	Device name synchronized	The name for de fully.
2019-04-14 08:31:57	Device trap	Information	Device name synchronized	The name for de fully.
2019-04-14 00:00:00	System Task	Warning	Unable to start schedule	The server was t
2019-04-14 00:00:00	System Task	Warning	Unable to start schedule	The server was t
2019-04-14 00:00:00	System Task	Warning	Unable to start schedule	The server was t
2019-04-13 08:32:10	Device trap	Information	Device name synchronized	The name for de d successfully.
2019-04-13 08:32:10	Device trap	Information	Device name synchronized	The name for de d successfully.
2019-04-13 08:32:08	Device trap	Information	Device name synchronized	The name for de fully.
2019-04-13 08:32:08	Device trap	Information	Device name synchronized	The name for de fully.

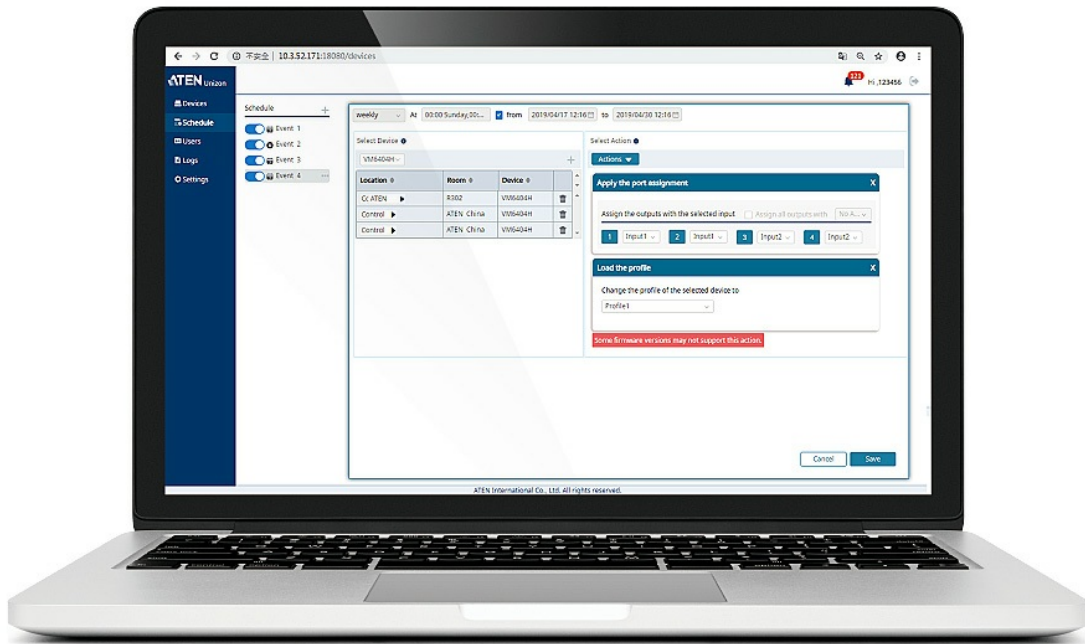


## Global Control and Scheduling

Perform and schedule routine tasks and firmware upgrades across multiple devices simultaneously.

### Device Group Control

Execute actions instantly across multiple devices simultaneously, such as switching ports, profiles, resolutions, and video off.



### Event Scheduling

Schedule routine tasks for devices to carry out, such as setting different video contents to display at specific times of the day or week.



Schedule +

---

- Event 1
- Event 2
- Event 3
- Event 4 ...

weekly v
At 00:00 Sunday,00:...
 from

Select Device i

VM6404H v

Location <span style="font-size: 0.8em;">d</span>	Room <span style="font-size: 0.8em;">d</span>	Device
Cc ATEN <span style="font-size: 0.8em;">▶</span>	R302	VM6404
Control <span style="font-size: 0.8em;">▶</span>	ATEN China	VM6404
Control <span style="font-size: 0.8em;">▶</span>	ATEN China	VM6404

VM6404H

Actions

↑ Upgrade

🗑️

		Device <span style="font-size: 0.8em;">d</span>
<input type="checkbox"/>	<span style="font-size: 0.8em;">▶</span> 1st	VM6404H <span style="font-size: 0.8em;">✖</span> <span style="font-size: 0.8em;">🌐</span>
<input type="checkbox"/>	<span style="font-size: 0.8em;">▶</span> 1st	VM6404Herewr <span style="font-size: 0.8em;">✖</span> <span style="font-size: 0.8em;">🌐</span>

More

**Firmware Upgrade**

Remotely update the firmware of multiple devices simultaneously directly through the platform, saving you time and maximizing productivity.

# Contact Us

Get a quote for this product or get in touch with our sales experts

[Get Quote](#)

[Contact Sales](#)

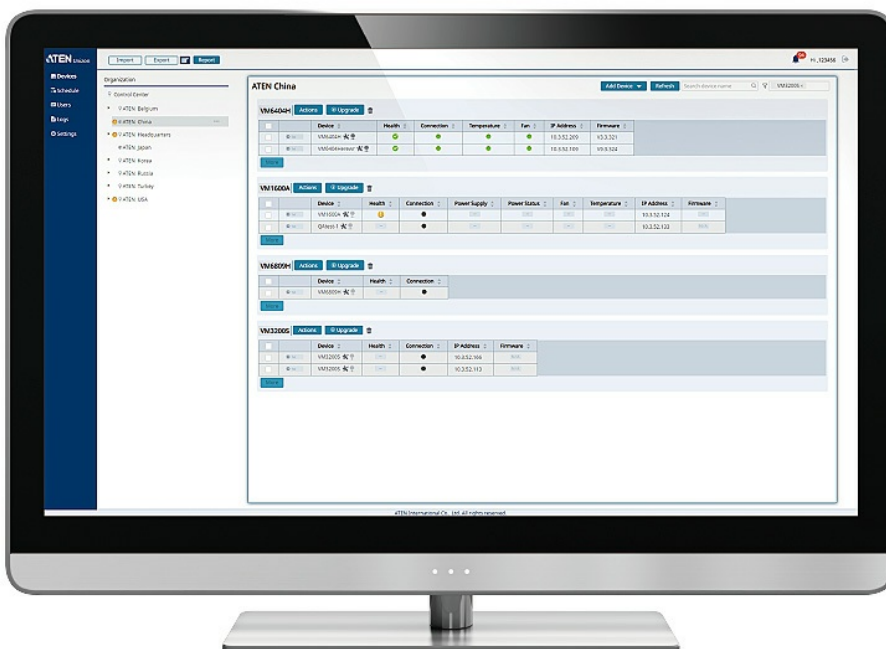


## Access and Location Management

Set user access levels and manage devices by room, floor, building, or even by city.

### Device Location Tree

Easily navigate the location of devices on the 5-level location tree by drilling down by room, floor, building, or even city.



**Floor View**

View devices across different buildings / floors grouped by device.

Import Export Report

Organization

- Control Center
- ATEN Belgium
- ATEN China
- ATEN Headqua...
- ATEN Japan
- ATEN Korea
- ATEN Russia
- ATEN Turkey
- ATEN USA

**ATEN USA** Organiz... Search organization n

VM6404H VM3200 VM3200S **VM1600A** VK2100 VK1100 VM6809H

		VM1600A	Actions				
Location	Room	Device	Health	Connection	Power Sup...	Power Stat...	Fan
Cc ATEN U ▶	R302 ▶	R409	<span style="color: orange;">!</span>	<span style="color: green;">●</span>	<span style="color: green;">●</span>	<span style="color: green;">●</span>	<span style="color: black;">●</span>
		QAtest-1	—	<span style="color: black;">●</span>	—	—	—
Cc AT R3 12 1234 ▶	R305 ▶	R409	<span style="color: orange;">!</span>	<span style="color: green;">●</span>	<span style="color: green;">●</span>	<span style="color: green;">●</span>	<span style="color: black;">●</span>
Cc AT R301 ▶	R305 ▶						

[More](#)

Import Export Report

Organization

- Control Center
- ATEN Belgium
- ATEN China
- ATEN Headqua...
- ATEN Japan
- ATEN Korea

**R302** [Add Device](#)

**VM1600A** [Actions](#) [Upgrade](#)

<input type="checkbox"/>		Device	Health	Connection	Power
<input type="checkbox"/>	<a href="#">1st</a>	R409	<span style="color: orange;">!</span>	<span style="color: green;">●</span>	
<input type="checkbox"/>	<a href="#">1st</a>	QAtest-1	—	<span style="color: black;">●</span>	

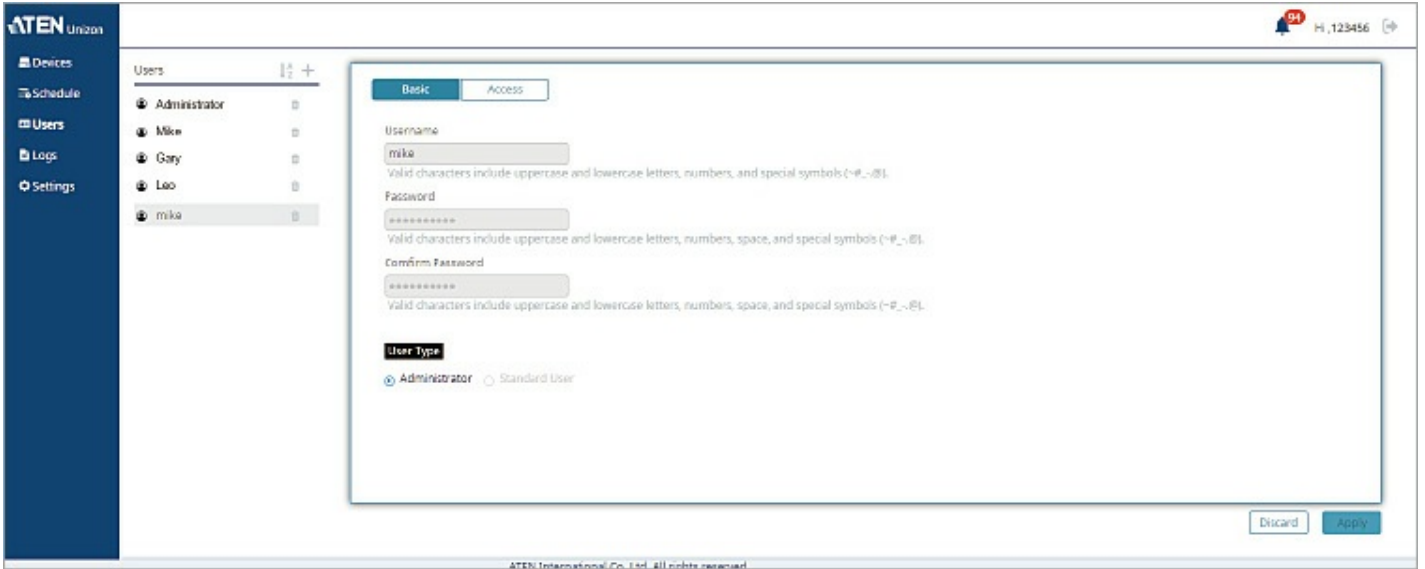
[More](#)

**Room View**

View information for individual devices located in a single room.

**User Roles and Access Levels**

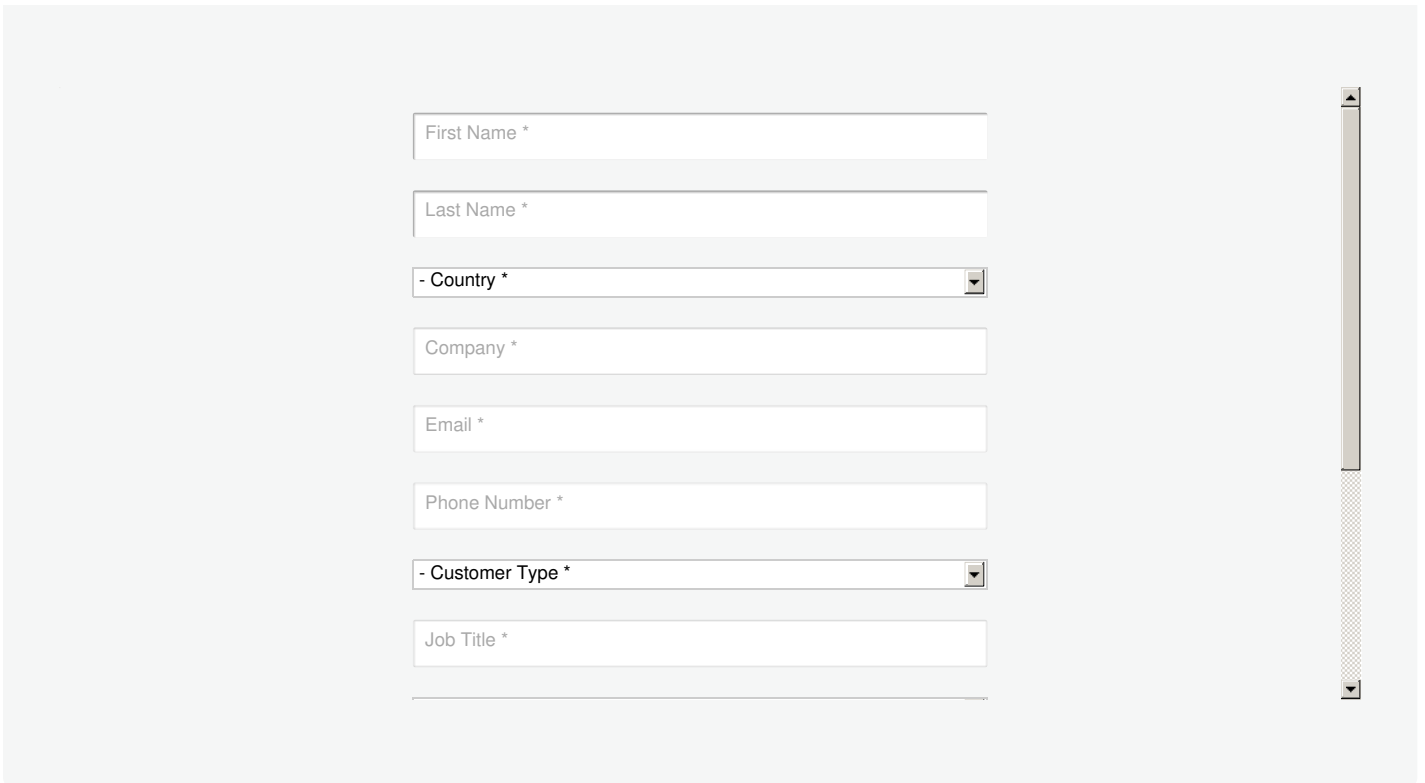
Define User Roles and respective permission access levels on a room-by-room basis so that information can be accessed by relevant people only.



## Talk to Our Experts

If you prefer to have ATEN contact you, please complete the form and a representative will be in touch with you shortly





The screenshot shows a registration form with the following fields:

- First Name \*
- Last Name \*
- Country \*
- Company \*
- Email \*
- Phone Number \*
- Customer Type \*
- Job Title \*

### Features

ATEN Unizon is a server-based software for remote centralized monitoring, control, and management of Ethernet-based ATEN Video Matrix Switches, ATEN Room Booking System, and 3rd party devices (such as projectors, lights, and AV devices) connected to ATEN Control System Controllers. By providing real-time access to device status, the platform streamlines daily AV/IT management, troubleshooting, analytics, and automation, making it the perfect solution to manage mass device deployments.

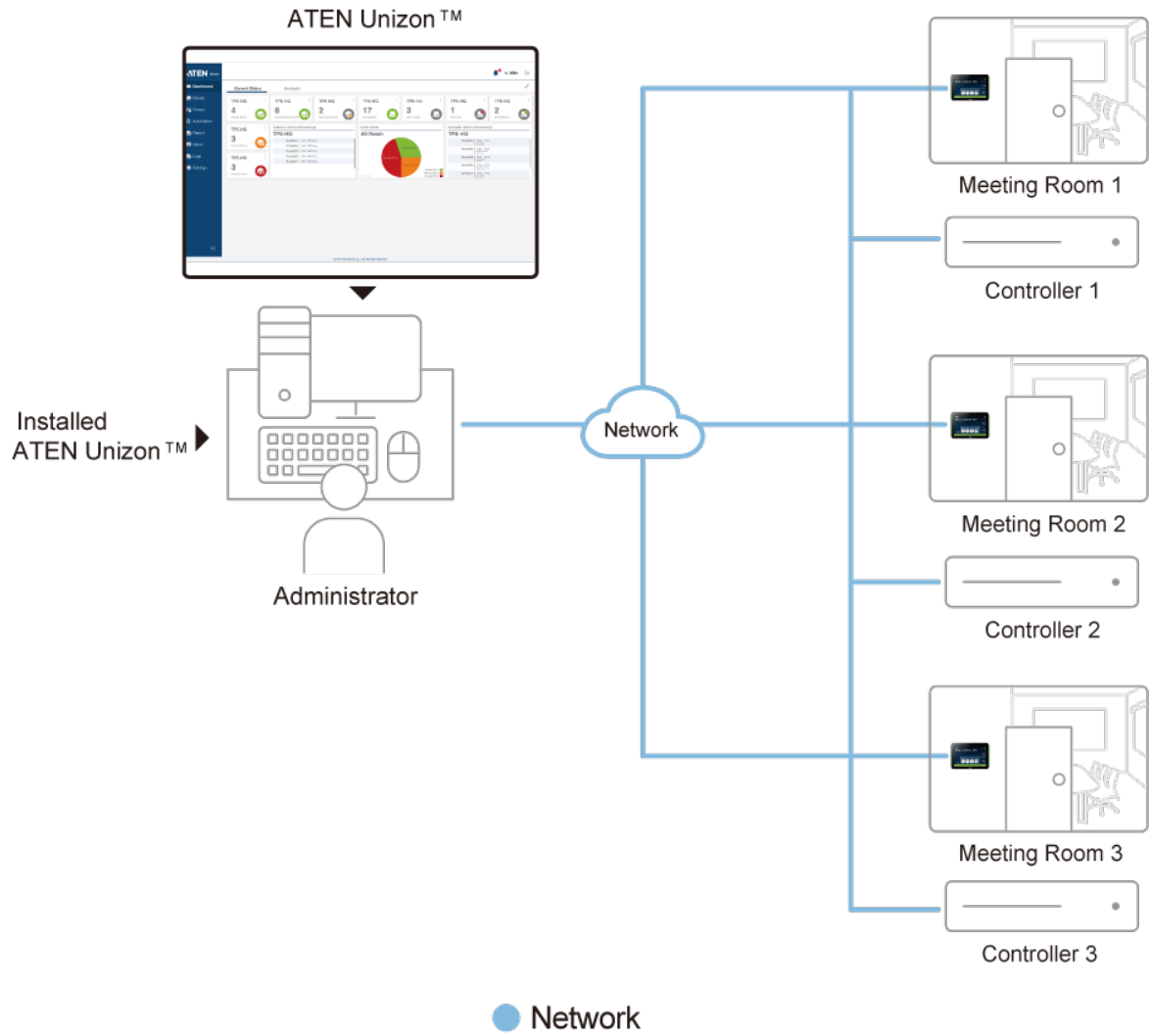
When working with ATEN Room Booking System, ATEN Unizon Timetable enables calendar syncing in real-time with RBS panels, allowing users to create / upload events on ATEN Unizon. Meanwhile, users can send requests through RBS Panels to ATEN Unizon for cleaning / catering / repair / replacement or report any issue occurs to the in-room equipment. Notifications of requests are trackable on the Unizon for effective resource allocation and timely issue resolution. Besides, user profiles are manageable via the RBS Panel-connected [VK401](#), enabling ATEN Unizon to restrict access rights only to the authorized person. Integration with ATEN VK control system facilitates room automation solutions.

- Centralized device monitoring, control, and management
  - ATEN Video Matrix Switches, Room Booking System, Control System solutions, including the managed third-party devices
  - Detection of device statuses, such as lamp hour of a projector and connection status for remote troubleshooting and maintenance
  - Batch device control and firmware upgrades
- Intuitive user interface for large-scale Pro AV applications, easy room monitoring and management across multiple locations
  - 5-level deployment tree
  - Supports room view and floor view
  - Configurable users access rights
- Predefined scenarios for automation and task scheduling
  - Provide meeting scenarios to choose and triggers actions from controllers
  - Automatically turn on / off lights, air-con, meeting room devices based on predefined actions
- Dashboard for current status and analytics
  - Current status info for real-time troubleshooting
  - Analytics of past usage records for future optimization
  - Preset rules for generating regular reports for optimizing device maintenance arrangement
- Requests can be sent via RBS Panels to ATEN Unizon for effective resource allocation and timely issue resolution
  - Allows on-screen request for cleaning / catering / repair / replacement or report of any issue occurs to the in-room equipment
  - Notifications of requests are sent in real-time to administrators and are trackable on the Unizon platform
- User profiles are managed in the Directory, including user name, email, pin code and card numbers etc
- Logs device usage, notifications, and emails for abnormal events for usability analysis and future optimization
- ATEN Unizon Timetable allows for calendar syncing in real-time with RBS panels to users to create / upload multiple events at one time on ATEN Unizon
- Supports mainstream web browsers
- License of different amount of controlled devices can be purchased based on users' need

**Specification**

Processor	3.2GHz
OS Support	Windows 8 (32/64 bit) and above
Storage Capacity	10 GB available hard disk space
System Memory	8 GB
Web Browser	Internet Explorer v.11 or later Microsoft Edge v.79.0.309 or later Mozilla Firefox v.72.0 or later Google Chrome v.80.0 or later
License	
Activation	<ul style="list-style-type: none"> <li>• UNIZON-BASIC (Number of Managed Devices: 50)</li> <li>• UNIZON-STD (Number of Managed Devices: 500)</li> </ul>
Maintenance	<ul style="list-style-type: none"> <li>• UNIZON-EXT1 (Supported Upgrade Durations for 1 Year)</li> <li>• UNIZON-EXT3 (Supported Upgrade Durations for 3 Year)</li> <li>• UNIZON-EXTLIFE (Supported Upgrade Durations for Lifetime)</li> </ul>
Add-ons	<ul style="list-style-type: none"> <li>• UNIZON-DEV10 (Additional 10 Devices for Management)</li> <li>• UNIZON-TIMETABLE (Timetable Feature Add-on)</li> </ul>
Note	When no license is uploaded, upto 3 devices can be managed.

Diagram



**ATEN International Co., Ltd.**

3F, No.125, Sec. 2, Datong Rd., Sijhih District., New Taipei City 221, Taiwan  
 Phone: 886-2-8692-6789 Fax: 886-2-8692-6767  
 www.aten.com E-mail: marketing@aten.com



© Copyright 2015 ATEN® International Co., Ltd.  
 ATEN and the ATEN logo are trademarks of ATEN International Co., Ltd.  
 All rights reserved. All other trademarks are the property of their  
 respective owners.